



# CWD-854

Wireless-G USB Dongle



**QUICK INSTALLATION GUIDE**

## **1. Package Contents**

Please check the package contents before using your new wireless adapter. Contact your vendor if any of the items listed below are missing.

- CWD-854 USB Dongle (1 pcs)
- Quick installation guide (1 pcs)
- User manual / device driver CD-ROM (1 pcs)

## 2. USB Adapter Installation

Please follow the instructions below to install the wireless USB adapter on your system. The following steps are for systems running on Windows XP.

(Procedures are similar for Windows 2000/XP/Vista)

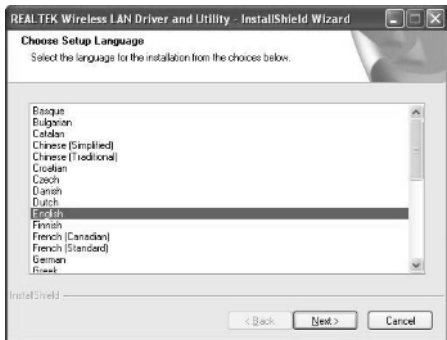


**Warning:** Do not insert the USB adapter into your system before installing the drivers from the CD.

1. Insert device driver CD into the CD/DVD ROM driver of your computer.

If the CD Auto-Run doesn't automatically start on your computer

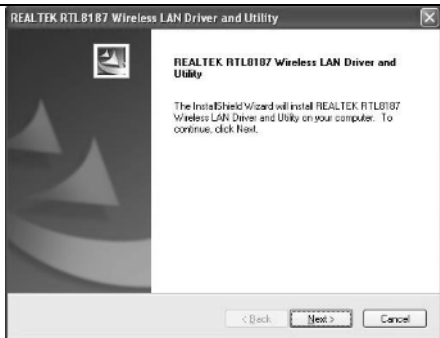
Please go to **Start > Run**, and type "**D:\AUTORUN.exe**" (where D: represents the drive letter of your CD/DVD ROM driver).



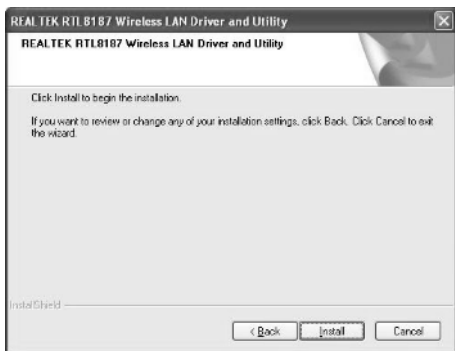
2. Please select the language you want to use and click **“Next>”** .



3. The installation process is being prepared.



4. Click **"Next>"** to continue and **"Cancel"** to abort the installation



5. Click **"Install"** to begin the installation or click **"Cancel"** to stop the process.



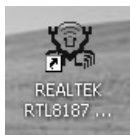
6. Please wait while the install procedure is running. When you see this message, please click '**Finish**' to complete the installation process.



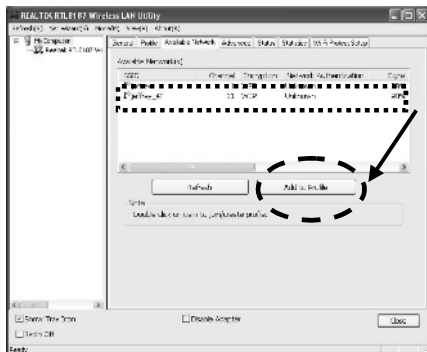
7. Insert the CWD-854 USB Dongle into an empty USB 2.0 port of your computer.

### 3. Connect to Wireless Access Point

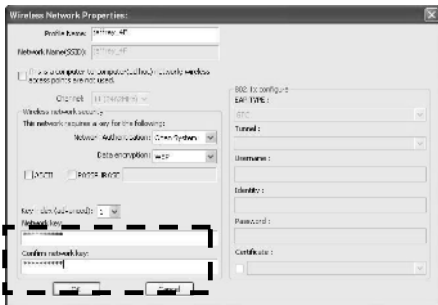
Using Realtek Wireless Configuration Utility to Connect to Wireless Access Point



1. After installation is complete, wireless configuration utility will be shown as an icon on your desktop. Please double click the icon to launch the configuration utility.

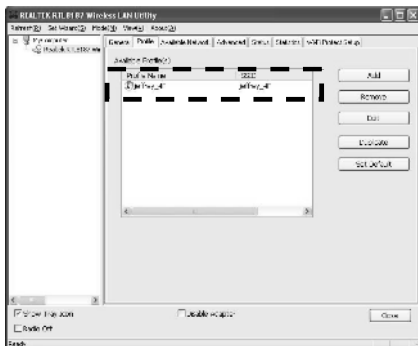


2. Configuration utility will automatically scan for wireless access points and display a list of "Available Networks". Please select an access point you wish to connect to and click "Add to Profile". Click on "Refresh", if your wireless access point is not shown in the list.

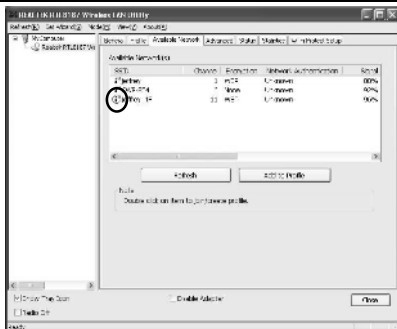



3. Configuration utility will automatically scan for wireless access points and display a list of "Available Networks". Please select an access point you wish to connect to and click "Add to Profile". Click on "Refresh", if your wireless access point is not shown in the list.

***Authentication type is selected automatically, please don't change it.***



4. The utility will automatically add the access point/router to a profile list



5. If wireless connection is successful, a connected icon  will be displayed at the lower left corner of the utility window. Click "close" to exit when done.

For advanced settings and other features of this USB wireless network card, please refer to user manual enclosed in supplied CD-ROM.

