

Installation Guide of Controllerless USB V.92 Modem

Support O/S

- | | |
|---------------|-----------------|
| 1. Windows 9x | 3. Windows 2000 |
| 2. Windows ME | 4. Windows XP |

Outlet Description



LED DESCRIPTION

OH Off Hook Indicator

Lights when the modem picks up or answer the telephone line.

TR Transmit / Receive Indicator

Flashes when transmit or receive data.

Hardware Connection



Connection Method

1. Line: Connect to your telephone line by RJ11 cable
2. Phone: Connect to your telephone set by RJ11 cable
3. USB Port: Connect to your PC by USB cable

Software Installation

Installation Procedures for Windows 9x

1. Windows will report that it has found a new hardware and will open the “Add New Hardware Wizard” reporting that it searches for the new drivers for a “V.92 Modem with USB Interface” device. Click **Next**.



2. To search for the best drivers for your device, click **Next**.



3. Insert the driver CD and specify the location: E:\Drivers\Win9x (E is your CD-ROM drive.) and then click **Next**.



4. Windows will show the message "Windows driver file search for the device "Controllerless USB V.92 Modem" and show the location of driver. Click **Next**



5. Click **Finish** to complete the installation procedures.

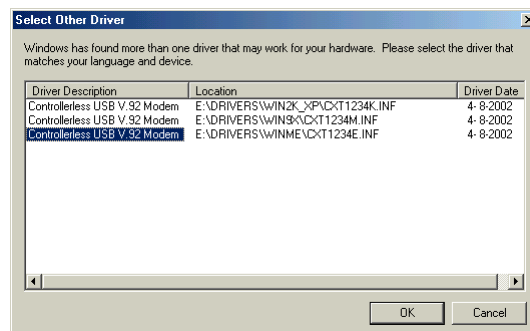


Installation Procedures for Windows ME

1. Connect the USB modem to PC with USB cable. Windows will find new hardware and ask for driver. Select “Automatic search for a better driver” and then click **Next** to begin installation.



2. Select Controllerless USB V.92 Modem whose location is E:\DRIVERS\WINME (E is your CD-ROM drive.) and then click **OK**.

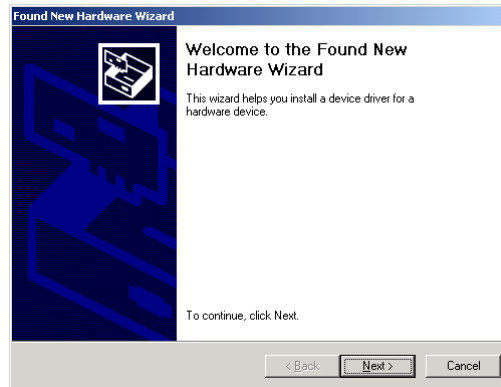


3. Windows will find the driver and finish the installation. Click **Finish** to complete installation.



Installation Procedures for Windows 2000

4. Connect the USB modem to PC with USB cable. When Windows detects the modem, the wizard will help you to install the new device. Click **Next** to begin installation.



5. Select "Search for a suitable driver for my device". Then click **Next**.



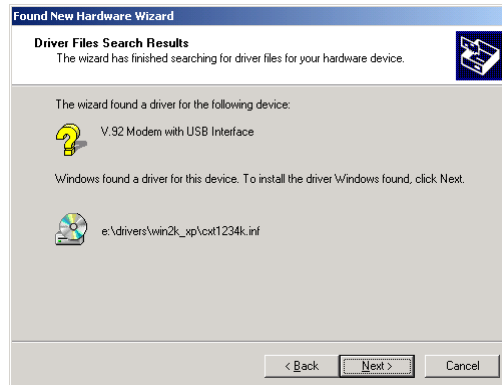
6. Select "Specify a location" only and then click **Next**.



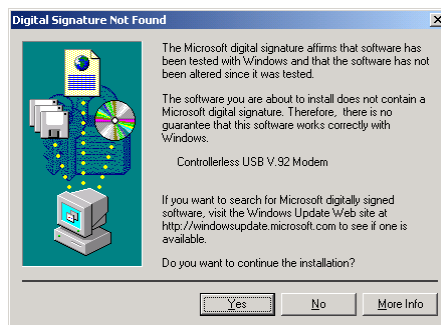
- Click **Browse** and indicate the path: E:\Drivers\Win2K_XP. (E is your CD-ROM drive.) Then click OK.



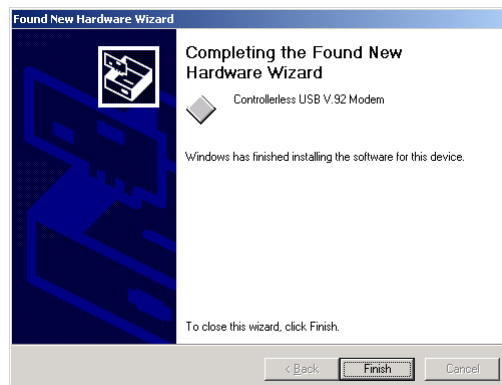
- Wizard will find the correct driver for the new device. Then click **Next**.



- Read the Digital Signature and then click **Yes**.

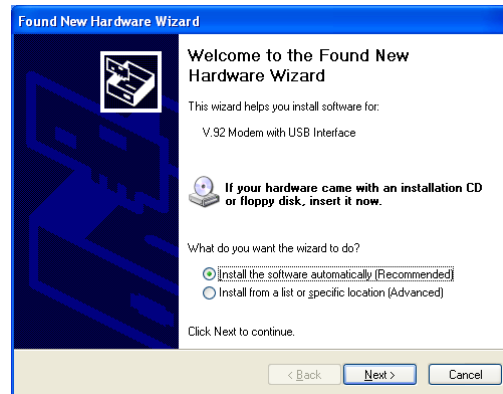


- Windows has finished installing the software. Click **Finish** to complete installation.



Installation Procedures for Windows XP

1. Connect the USB modem to PC with USB cable. When Windows detects the modem, the wizard will help you to install the new device. Insert the driver CD into your CD-ROM drive. Select “Install the software automatically” and then click **Next**.



2. Click **Continue Anyway** to continue this installation.



3. Click **Finish** to complete the installation.

