

## Load Balancing Broadband Router



### Performance

CUBR-1705 is a new high performance load-balancing broadband router with powerful data processing, high-speed switching and fast NAT algorithm. The new router is broadband tuned providing packet forwarding rates of over 3 times and is capable of servicing 200 concurrent connections.

### Reliability

Optimized toward broadband applications, CUBR-1705 can adapt to many traffic scenarios and with it's self adapting Ethernet ports that can be configured in any WAN/LAN port combination, this router is an ideal choice for SMB networks and net cafes.

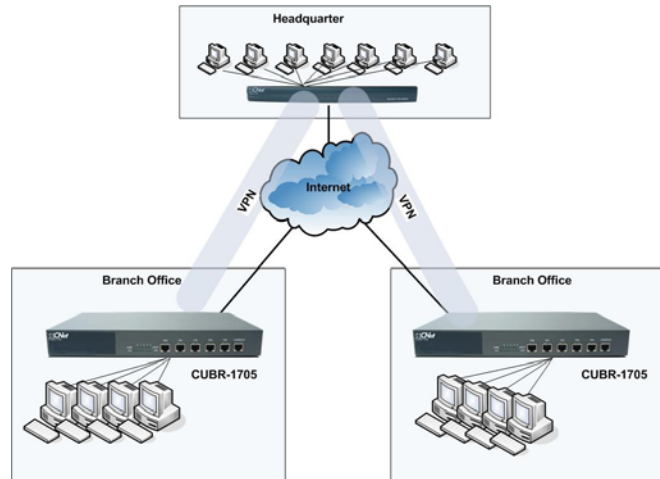
### Flexible and Smart

With support for all mainstream WAN access options, an efficient built-in firewall with less impact on CPU, an advanced access control menu by IP, protocol, port, MAC address and /or time as well as VPN support through L2TP, IPSec and PPTP, CUBR-1705 is the best choice for branch offices needing secure connections to their headquarters.

## Features

- Optimized for broadband applications
- Powerful data processing with fast NAT algorithm boosting forwarding
- rates by 3 times.
- Support all mainstream WAN access options
- 5 x 10/100Mbps self adapting Ethernet ports
- Load balancing through multiple WAN port configuration
- Built-in firewall with less impact on CPU
- VPN support through L2TP, IPsec PPTP or their combinations

## Application



## Specifications

Flash	4MB
BootROM	512KB
SDRAM	32MB
Ports	5x10/100Mbps Fast Ethernet, 1x Console
Forwarding Rate	70~80Kpps
Dimensions	340 x 200 x 44 mm (13.6 x 8 x 1.76 inches)
Power Supply	100 ~ 240V, 47 ~ 63 Hz
Temperature	Operating: 0 ~ 40° C (32 ~ 104° F), Storage: -20 ~ 65° C (23 ~ 149° F)
Humidity	Operating: 10 ~ 85%, Storage: 5% ~ 95% (non condensing)

[www.cnetusa.com](http://www.cnetusa.com)