

3

Broadband Router

2 Click the button **Next** the **LAN Setting** page will appear on the screen. Go on to **D. LAN Setting** for further parameter settings on LAN.

▶ **Fixed-IP xDSL Connection:** If you select Fixed-IP xDSL as your WAN connection type, the following page appears,

1 Enter the correct information of IP address, Subnet Mask, Gateway Address and the primary and secondary Server address provided by your ISP.

2 Click the button **Next** the **LAN Setting** page will appear on the screen. Go on to **D. LAN Setting** for further parameter settings on LAN.

▶ **Dial-Up xDSL (PPPOE) Connection:** If you select Dial-Up xDSL (PPPOE) as your WAN connection type, the following page

1 PPPoE is a common type of Internet access provided by many xDSL Internet Service Providers. It requires you to enter the User Name and the Password of your ISP account to obtain authentication to dial up. Two additional optional fields can be assigned values by the user:

- i MTU: It is used to specify the **Maximum Transmit Unit** of a packet over PPPoE link. Do not enter a number to this field only when your ISP request a different MTU size from the default value, 1492 bytes.
- ii Idle Time: If the Idle Time is specified with non-zero value, router will disconnect the PPPoE session after there is no data traffic on WAN interface within the specified **Idle Time** minutes. Once there is any outgoing data traffic, the router will automatically re-establish the PPPoE session.

2 Click the button **Next** the **LAN Setting** page will appear on the screen. Go on to **D. LAN Setting** for further parameter settings on LAN.

D LAN Setting:

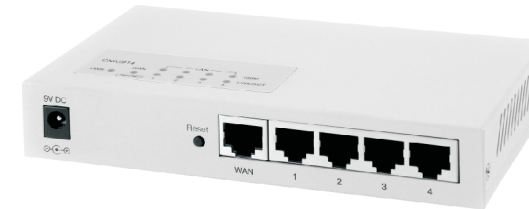
Click the **Next** button takes you to the next page.

Click on **Finish** to finish up the setting. It will take roughly 20 seconds to re-boot the router with the following page showing the Router is being re-booted.

E Restart your computers so that they can obtain the Router's new settings.

F Test the setup by opening your web browser from any computer and enter your favorite web site to verify if you have succeeded in surfing the Internet.

Broadband Router



Quick Installation Guide

P/N:12-06-0100-B1

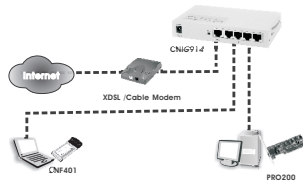
1

Broadband Router

This Quick Installation Guide is meant to help you install the product quickly and easily. For detailed installations, configurations and Advanced setup of the Router, please refer to the User's guide.

Application Diagram

This application diagram shows a typical scenario for the Broadband Router. Steps 1, 2, and 3 will explain how to connect the Router to a PC with an Ethernet adapter, configure the PC(s), and configure the Router's basic settings.



1 Connect the Broadband Router

- A** Before you begin, make sure that you have the setup information for your specific type of Internet connection. The installation technician from your ISP should have left this information with you after installing your broadband connection. If not, you can call your ISP to request the settings.
- B** Make sure that all of your network's hardware is powered off, including the Router, PCs, and cable or DSL modem.
- C** Connect one end of an Ethernet network cable to one of the LAN ports (labeled 1-4) on the front of the Router, and the other end to an Ethernet port on a PC. Repeat this step to connect additional PCs or other network devices to the Router.



- D** Connect a different Ethernet network cable from your cable or DSL modem to the Internet port on the Router's front panel. This is the only port that will work for your modem connection.



- E** Power on the following devices in this order: cable or DSL modem, Router, and PCs.
- F** Make sure the Power and WAN LEDs on the top of the case light up green.

2 Configure the PCs

Before setting up the Router, make sure your PCs are configured to obtain an IP (or TCP/IP) address automatically from the Router. The following instructions apply only to Windows 2000 or XP. For Windows 98/ME, please refer to the User's guide.

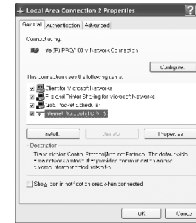
- A** Click the **Start** button. Select **Settings** and click the **Control Panel** icon. Double click the **Network and Dial-up Connections** icon.
- B** Select the **Local Area Connection** icon for the applicable Ethernet adapter (usually it is the first Local Area Connection listed). Double click the **Local Area Connection**. Click the **Properties** button.



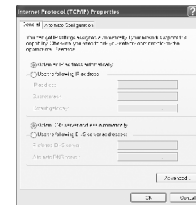
- C** Make sure the box next to Internet Protocol (TCP/IP) is checked. Highlight **Internet Protocol (TCP/IP)**, and click the **Properties** button.

2

Broadband Router



- D** Select **Obtain an IP address automatically**. Once the new window appears, click the **OK** button. Click the **OK** button again to complete the PC configuration.



- E** Restart your computer.

For Windows 98/ME users, please refer to chapter 4 of the User's manual.

3 Configure the Broadband Router

These instructions will show you how to configure the Router. You only need to configure the Router once using any computer you have setup.

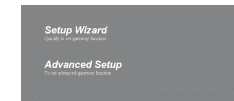
- A** Open your web browser. Enter **http://192.168.1.1** in its Address field. Press the **Enter** key.



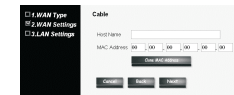
- B** An **Enter Network Password** window will appear. Enter the username and password, the default username is **admin** and the default password is **admin**. (In order to increase security, later you should change the default on your own by using the Advanced Setup of the setup Wizard utility). Then click the **OK** button.



- C** For the WAN connection type setting, three connection types, Cable Modem, Fixed-IP xDSL and Dial-up xDSL (PPPOE) are offered. Click **Setup Wizard** button in the below page to configure connection:



- Cable Modem:** If you are using Cable Modem to connect to Internet, select the **Cable Modem** button and follow the instructions below.



- 1 Two option fields may be required to enter by some Internet Service Providers.

- a Host name:** a string of characters usually is the name of your PC, which is configured by your ISP.
- b Clone MAC Address:** It is your PC Ethernet Interface Card's MAC address.