

CMP-102U

Quick Installation Guide

V1.0

<http://www.cnet.com.tw>

CMP-102U

Supports One High-speed USB2.0 Port MFP Server

Supports 10/100Mbps Fast Ethernet Network

Quick Installation Guide

1 Package Contents:

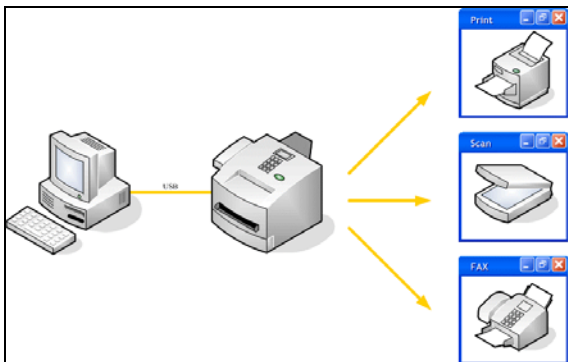
- **One CMP-102U MFP server.**
- **One external AC power adapter (output power 3.3V/2A DC).**
- **One Setup CD includes driver utility and user manual (for Windows 2000/XP).**
- **One Quick Installation Guide (this one).**

2 Before installation

- 2.1 **Check the integrity of the package.**
- 2.2 **Please note that some proprietary MFP may**

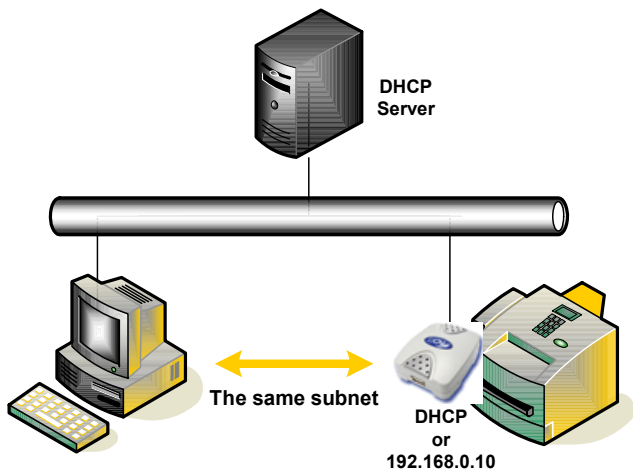
not be supported, please check the MFP's specifications first.

- 2.3 Please follow the MFP's User Manual to set up the device, make sure that its printing, scanning and faxing function works well.**



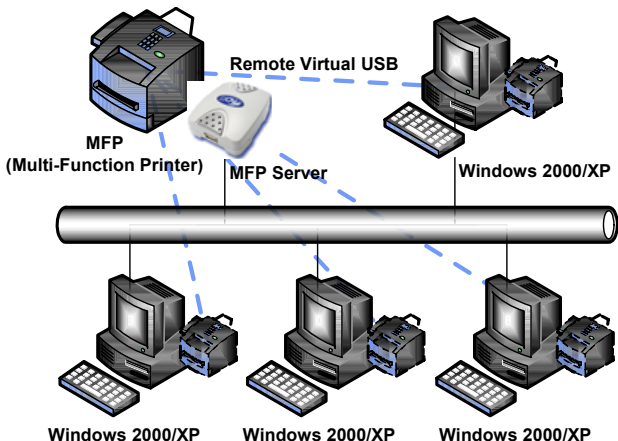
- 2.4 Confirm that the IP address of your PC must be within the same subnet as this MFP server, or you can not go on setting. Default IP setting of this MFP Server is DHCP Client, it will get IP address from your DHCP Server automatically,**

**if there is no DHCP Server on your LAN, MFP Server will change its IP address into
“192.168.0.10.”**



2.5 CMP-102U MFP Server is for Windows 2000/XP Operating System only, it does not support other operating systems such as Windows 9X/NT/2003.

2.6 Wired Network with CMP-102U MFP Server:



2.7 We do not recommend to use MFP Server on wireless LAN network.

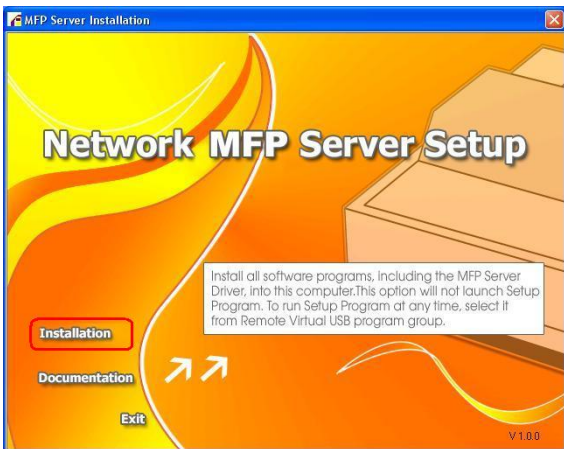
3 MFP Server installation:

3.1 Plug in power adapter into MFP Server, confirm that the Status LED indicator flashes seven(7) times, and then on.

- 3.2 **Plug in RJ45 Ethernet cable into MFP Server, confirm that LAN LED indicator lights up on MFP Server and your LAN switch hub.**
- 3.3 **Turn on your Multi-Function Printer.**
- 3.4 **Connect USB Cable to MFP and MFP Server, confirm that the USB LED indicator lights up on MFP Server.**

4 Software Installation:

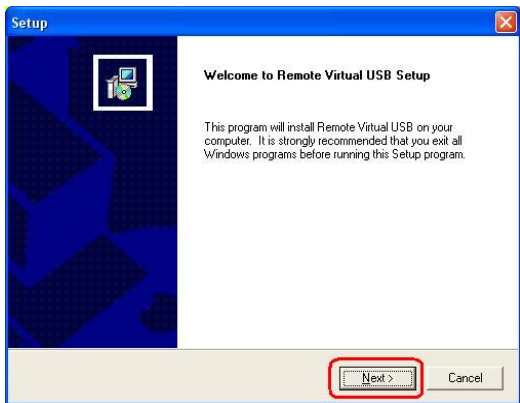
- 4.1 **Insert the MFP server setup to the CD-ROM drive on your PC. If the start-up screen does not appear, double-click "My Computer", double-click the "CD-ROM" icon, and then double-click "autorun.exe."**
- 4.2 **Choose "Installation" to install all software programs.**



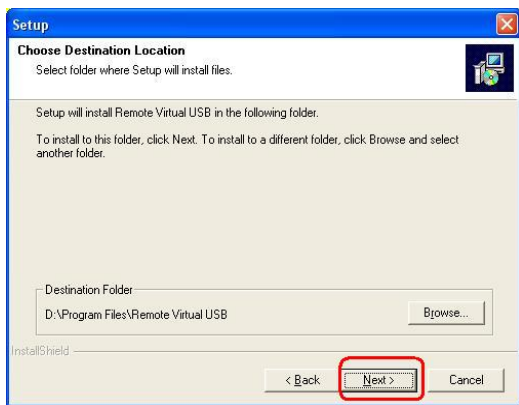
- 4.3 On the Choose Setup Language window, select your preferred language and then click “OK.”



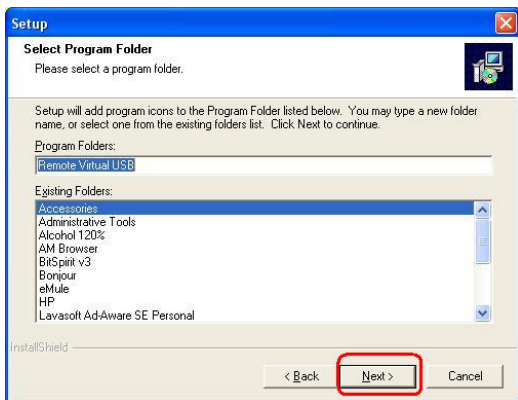
- 4.4 On the Setup window, “Welcome to Remote Virtual USB Setup ”screen will show, click “Next >.”



- 4.5 The “Choose Destination Location” screen will pop up, click “Next >.”



4.6 On the “Select Program Folder” screen, click “Next>.”

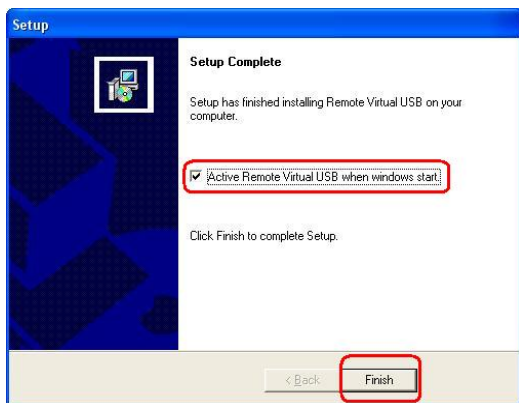


4.7 The “Driver Installer” window will show now, click “OK.”



4.8 On the “Setup Complete” screen, If you would like the MFP server software to run

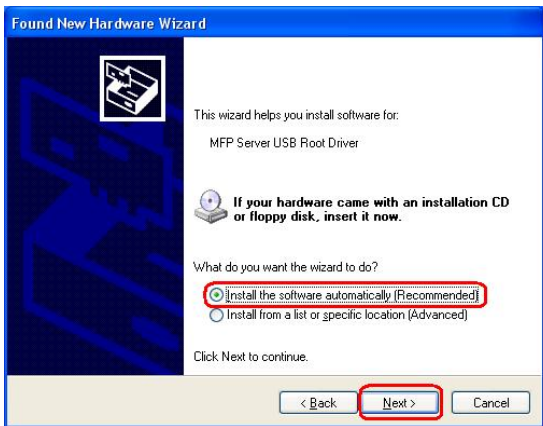
automatically when starting your computer (recommended), leave this box checked and click “Finish”.



4.9 The “Found New Hardware Wizard” window shows up. On the “Welcome to the Found New Hardware Wizard” step, select “No, not this time”, and then click “Next >.”



- 4.10 **Select “Install the software automatically (Recommended)”, and then click “Next >.”**



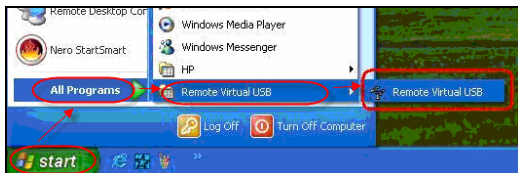
- 4.11 **On the “Hardware Installation” window, click “Continue Anyway.”**



- 4.12 **On the “Completing the Found New Hardware Wizard” step, click “Finish” to complete the software installation.**



- 4.13 Click “start” → “All Programs” → “Remote Virtual USB” folder, then click “Remote Virtual USB” to launch MFP server utility.



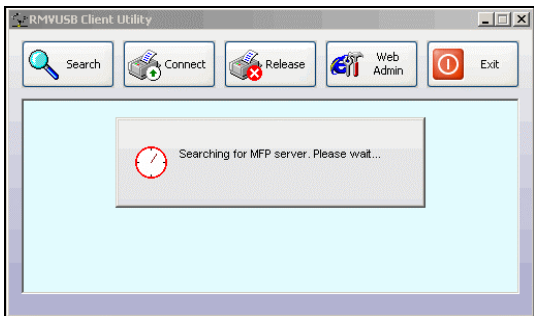
- 4.14 If you have Windows XP and the Windows

Firewall enabled, you will see the following pop-up message when the MFP server utility is for the first time launched. Make sure you click the “unlock” button to allow communication with the MFP server. Other software firewalls may display similar options – make sure the MFP server software is allowed to bypass such programs.



4.15 The MFP server utility will search your

network for the MFP server and display it in the window automatically . If no MFP server is found, please make sure any third party firewalls have been disabled or bypassed and click the Search button to try again.



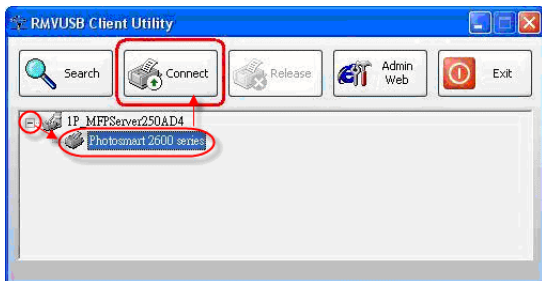
Note:

- 1. If you don't have the DHCP Server on your LAN, MFP server will change its IP address into "192.168.0.10", and subnet mask will be 255.255.255.0." If the MFP server utility can't find**

any MFP server, please make sure that the MFP server and your computer's IP addresses are in the same network segment.

2. See Chapter 5' TCP/IP Settings to setup IP address manually.

- 4.16 Click the “ican” in front of the MFP server name to show the name of the attached printer. Then select the printer name and click the “Connect” button in the MFP server RMVUSB client utility.

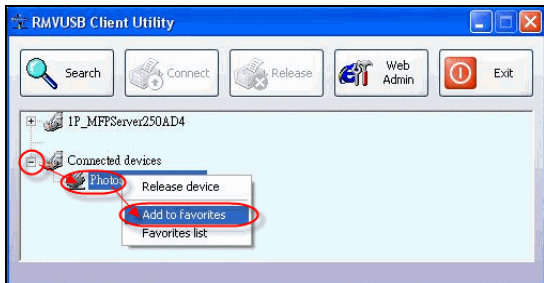


- 4.17 The printer should be detected as if it was

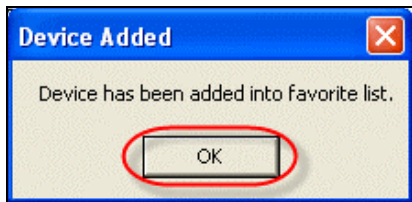
plugged directly into the computer. Finish any remaining setup needed by the printer software. Your MFP printer should be ready to use now.



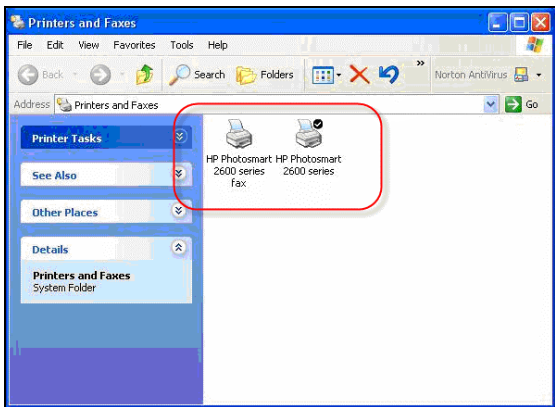
- 4.18 If you would like the connection with this printer to be restored automatically whenever the MFP server is utility launched, you will need to add the device to your favorites list. Click the “+” in front of Connected devices and right-click on the name of the printer. Choose Add to favorites from the menu that pops up.**



- 4.19 **Click “OK” to confirm that the printer is in your favorites list.**



- 4.20 **From Windows 2000/XP system, go to “start” → “Printers and Faxes” and make sure that the icon of your MF printer is appeared.**



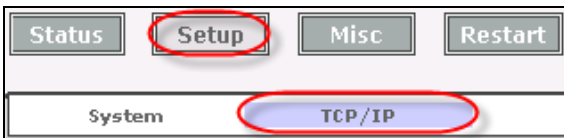
Congratulations! Your MFP is now ready to print.

5 TCP/IP Settings

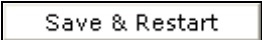
- 5.1 **If you don't have the DHCP Server on your LAN, MFP server will change its ip address into "192.168.0.10" by default. If the MFP server utility can't find any MFP server, please make sure that the MFP server and your computer's IP addresses are in the same segment.**

- 5.2 Click  to browse the MFP server's web interface.

- 5.3 Click "Setup" → "TCP/IP".



- 5.4 On the TCP/IP Settings screen, change the IP address of the MFP server. The IP address of the MFP server must be within the same subnet as your network adapter. Press

 to finish setup.

TCP/IP Settings

Obtain TCP/IP settings automatically (use DHCP/BOOTP)

Use the following TCP/IP settings

IP Address:

Subnet Mask:

Default Router:

- 5.5 Change the IP address of your PC back to the same subnet as your network.

Note:

If you wish to setup more MFP servers, start MFP server utility from your Windows Start menu: start -> All Programs -> Remote Virtual USB -> Remote Virtual USB and repeat the setup procedure.

All contents are subject to changes without prior notice.

