

# **CWP-903**

**Wireless-MIMO PCI Adapter**



## **Quick Installation Guide**

# Requirements

The following components are needed to setup the wireless-MIMO adapter:

- A desktop computer with Intel-compatible Pentium 300 MHz or above
- 30 MB RAM
- 10 GB hard disk space
- Windows 98 SE/ ME/ 2000/ 2003/ XP
- A wireless Router (optional for a wireless network)

## Installing the Driver and Utility

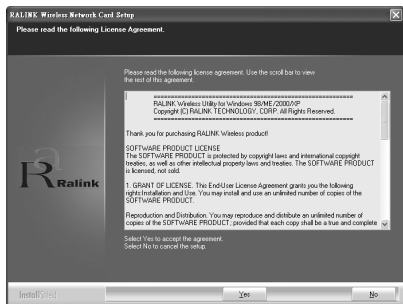
The installation process and screens are similar for all supported Windows versions. Example screens for Windows XP are shown.

**Do NOT insert the wireless adapter at this point.**

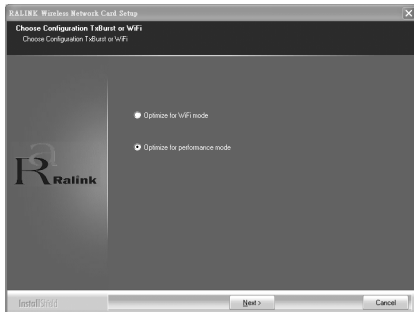
1. Insert the installation CD into the CD-ROM drive.
2. The CD auto runs. Otherwise search and click on **AUTORUN.exe** on the CD.
3. The main installation screen displays. Click on **Install Driver and Utility** to install driver/utility for your Adapter.



4. In the next screen, click **Yes** to agree with the license and start the installation process.



5. Select the **Optimize for WiFi mode** or **Optimize for performance mode**, then click **Next >** to continue.



6. Click **Finish** to complete the installation process  
7. Insert the adapter.  
8. Double-click on the icon to display the configuration utility.



**For Windows XP, you may use the Zero Configuration Utility to configure your wireless adapter.**

**For advanced setup information, refer to the User's Guide.**

## Troubleshooting

1. None of the LEDs turn on when I insert the wireless adapter.
  - Make sure you have powered on your computer.
  - Make sure you have installed the correct utility and driver for your wireless adapter.
  - Restart your computer and insert the wireless adapter.
  - Make sure there is no hardware conflict. Check your computer resource information.
  - Install and insert the wireless adapter on a different computer.
2. I cannot connect to the configuration utility.
  - Make sure the wireless adapter is inserted properly.
  - Make sure you have installed the correct utility version for your wireless adapter.
3. I cannot connect to a wireless network.
  - Make sure the **Power** LED on the wireless modem is on.
  - Make sure the wireless router or AP is within range. Move your computer closer to the wireless router.
  - Make sure that you have set the wireless network settings correctly. For example, the SSID and security settings.
  - Make sure there is no radio interference (for example, cordless phones, microwave oven, etc) that may effect wireless transmission quality.