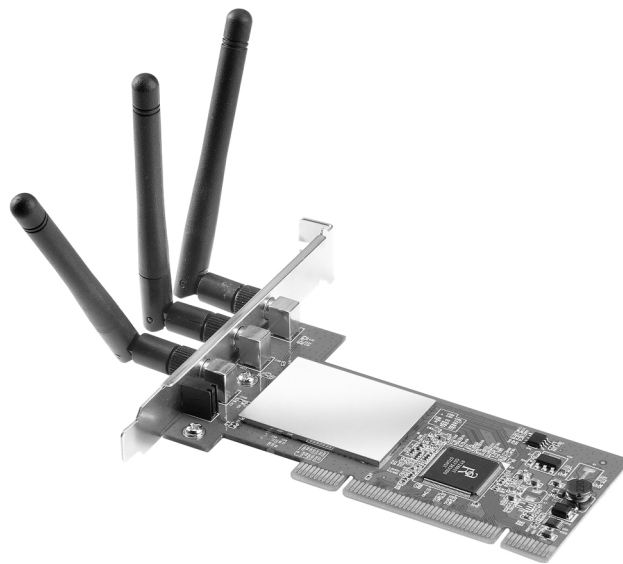




***CWP-905***  
***Wireless-N PCI Adapter***

**Quick Installation Guide**



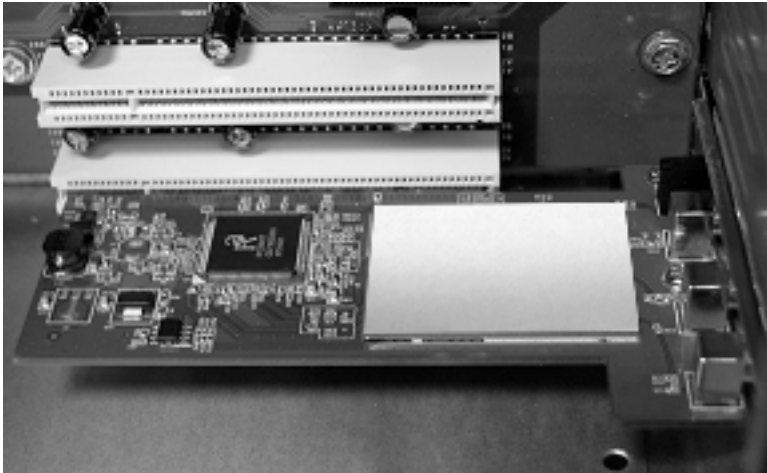
# 1. Package Contents

Before you starting to use this wireless network card, please check if there's anything missing in the package, and contact your dealer of purchase to claim for missing items:

□ CWP-905 Wireless-N PCI Adapter (1 pcs).....	1
□ Quick installation guide (1 pcs) .....	2
□ User manual / device driver CDROM (1 pcs) .....	3
□ Antenna (3 pcs) .....	4

## 2. Network Card Installation

The installation process and screens are similar for all supported Windows versions. Example screens for Windows XP are shown. Please follow the following instructions to install your new PCI wireless network card:



1. Turn off your computer, and remove the case as required so you can see PCI expansion slots (PCI slots are usually colored as white), and then insert the PCI wireless network card into any available the PCI slot.

***Please make sure the network card is firmly inserted.***



2. Install all three antennas on the wireless network card, and make sure the antennas are securely installed. To improve radio reception, please adjust antennas to the position shown in the left picture.

It's recommended to use the antenna included in the package. If you're going to use antenna of your own, please make sure those antennas are designed for 2.4GHz wireless devices.

### Found New Hardware Wizard



#### Welcome to the Found New Hardware Wizard

Windows will search for current and updated software by looking on your computer, on the hardware installation CD, or on the Windows Update Web site (with your permission).

[Read our privacy policy](#)

Can Windows connect to Windows Update to search for software?

- Yes, this time only  
 Yes, now and every time I connect a device  
 No, not this time

Click Next to continue.

< Back

Next >

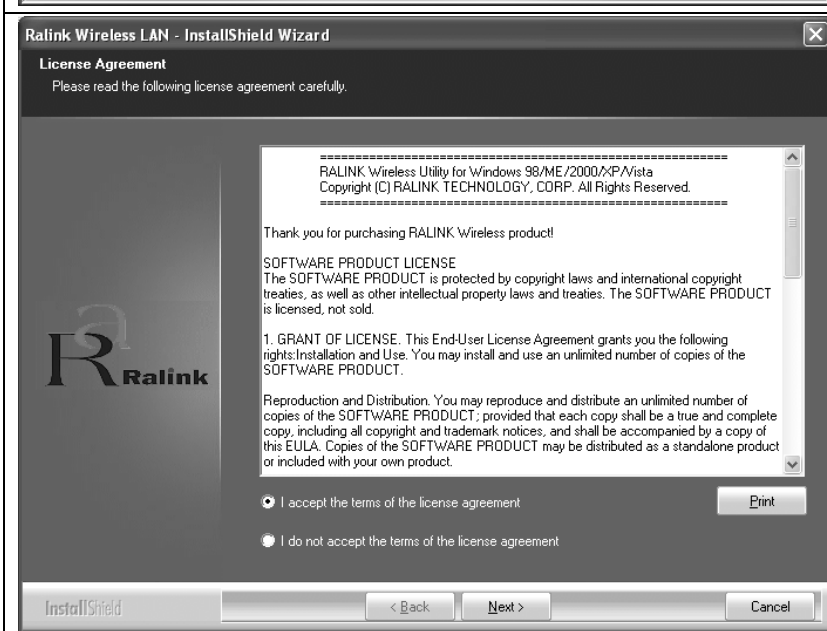
Cancel

3. Switch the computer on now, and log in the Windows system. The following message will appear on your computer, click **'Cancel'**.



4. Insert device driver CDOM into the CD/DVD ROM drive of your computer. The CD auto runs. Otherwise search and click on **AUTORUN.exe** on the CD. Then the main installation screen displays. Click the **CWP-905** driver and utility.

**Note: Please select 'Allow' if Windows indicates that 'an unidentified program wants access to your computer'.**



5. Please read the end user license agreement and click 'Yes' to accept license agreement.



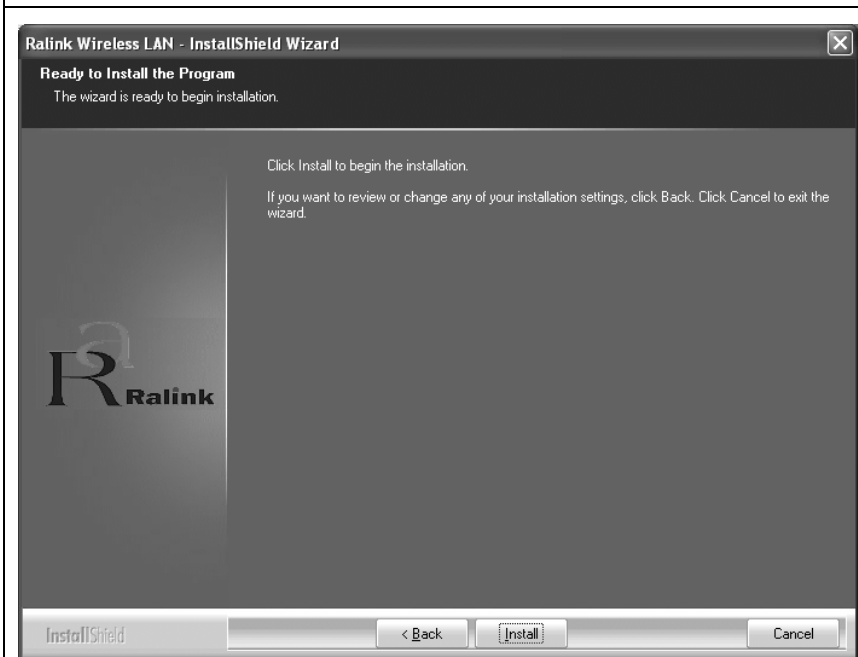
6. You can choose the configuration tool used to configure the wireless network card here. It's recommended to select '**Ralink Configuration Tool**', which provides fully access to all function of this wireless network card. If you prefer to use the wireless configuration tool provided by Windows XP, please select '**Microsoft Zero Configuration Tool**', then click '**Next**'.



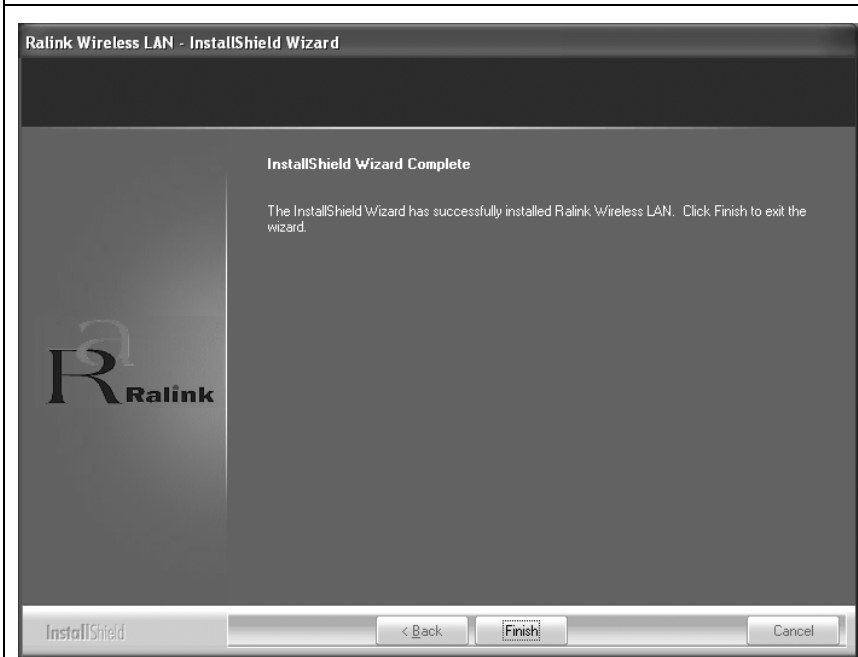
7. Please select 'Optimize for WiFi mode' for wireless compatibility, then click '**Next>**'.

If you want to enhance wireless performance, please select 'Optimize for performance mode'. However, wireless compatibility is not guaranteed in this mode. Please refer to user manual for details of performance mode.

**If you see 'Found New Hardware' message again, please ignore it and wait.**



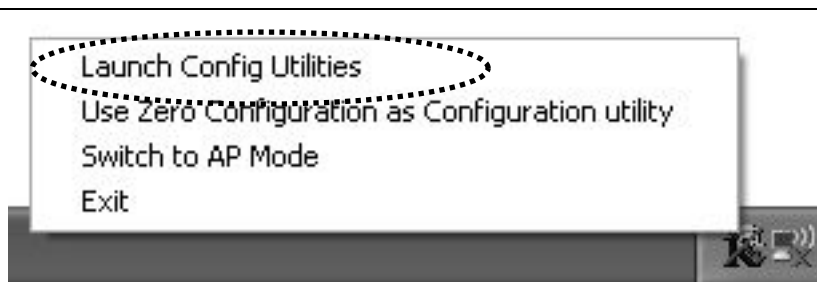
8. Please click '**Install**' to run the driver installation process.



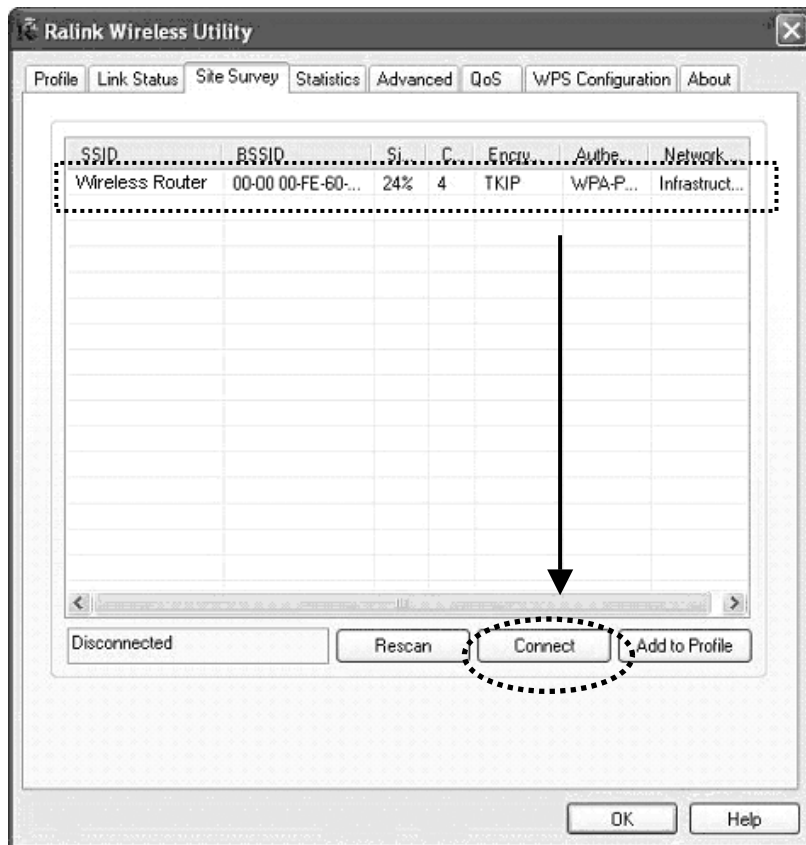
9. When you see this message, please click '**Finish**' to complete the driver installation process.

### 3. Connect to Wireless Access Point

Using Configuration Utility to Connect to Wireless Access Point



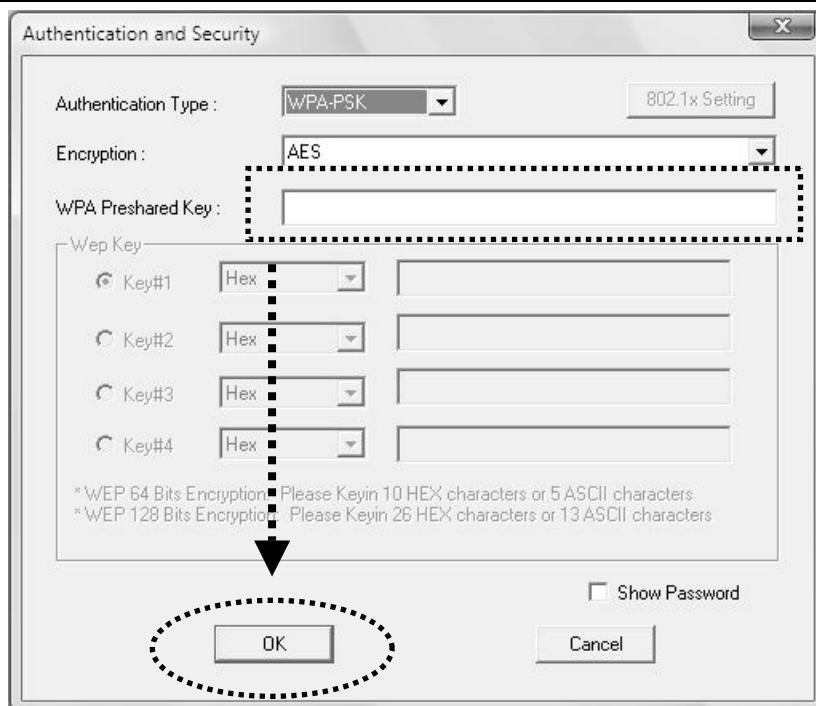
1. After installation is complete, wireless configuration utility will be shown as an icon at the lower-right corner of your windows desktop. Please click the icon by right mouse key, and select '**Launch Config Utilities**'.



2. Configuration utility will scan for wireless access points automatically, and all found access points will be displayed. Please select an access point you wish to connect, and click '**Connect**'.

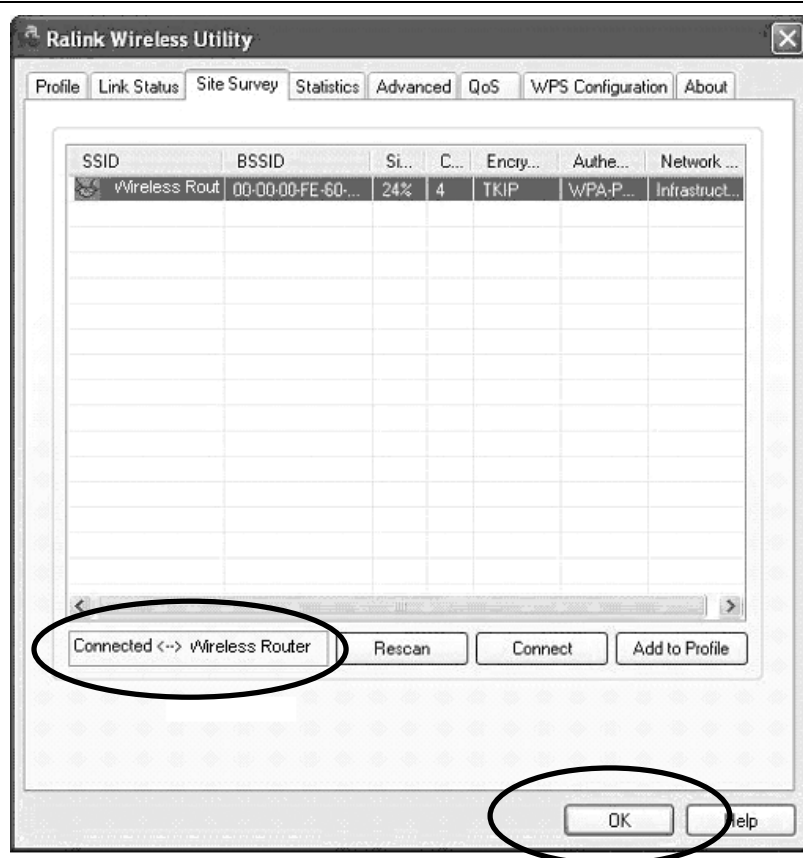
If the wireless access point you want to connect does not show here, please click 'Rescan'

**Note:** There is no **Connect** button in Window Vista. You have to use the **Add Profile** feature to build the wireless connection with the selected network. Please refer to the **Profile** information.



4. If the wireless access point uses encryption, you have to input WEP passphrase or WPA preshared key. Please ask the owner of the wireless access point you want to connect, and input the correct passphrase / preshared key here, then click '**OK**'. If the value you inputted here is wrong, you will not be able to connect to wireless access point.

**Authentication type is selected automatically, please don't change it.**



5. If the wireless access point is successfully connected, you'll see a 'Connected' message displayed at the lower-left corner of wireless configuration utility window. Click 'OK' to exit.

**For advanced settings and other features of this PCI wireless network card, please refer to user manual enclosed in supplied CD-ROM.**