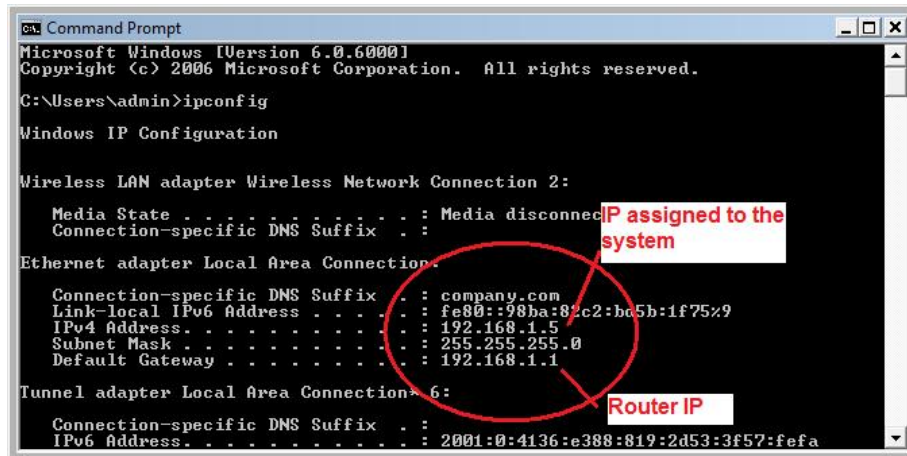


CNIG-914 Broadband Router/Vista compatibility work around

It's been found that computers with Windows Vista operating system connected to CNet CNIG-914 will not receive DNS info from Cable/DSL modems connected to the router's WAN port. Below are the steps to overcome this problem while CNet resolves the issue.

- Connect the Vista system to one of the LAN ports on the router.
- Bring up a command prompt window and type ipconfig. Make sure the system is getting an IP from the router. See picture below.



```
Microsoft Windows [Version 6.0.6000]
Copyright (c) 2006 Microsoft Corporation. All rights reserved.

C:\Users\admin>ipconfig

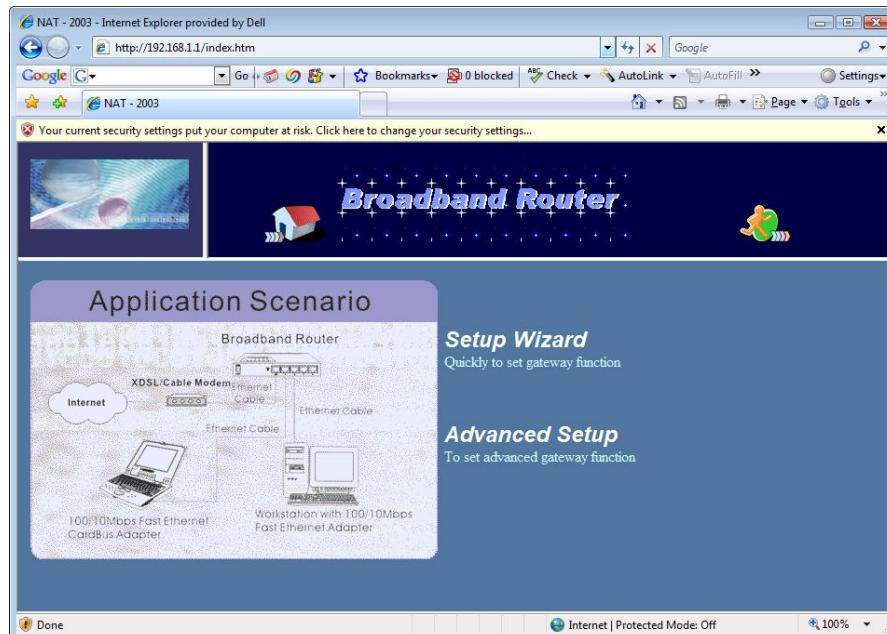
Windows IP Configuration

Wireless LAN adapter Wireless Network Connection 2:
    Media State . . . . . : Media disconnected
    Connection-specific DNS Suffix . :

Ethernet adapter Local Area Connection:
    Connection-specific DNS Suffix . : company.com
    Link-local IPv6 Address . . . . . : fe80::98ba:82c2:bc5h:1f75x9
    IPv4 Address. . . . . : 192.168.1.5
    Subnet Mask . . . . . : 255.255.255.0
    Default Gateway . . . . . : 192.168.1.1

Tunnel adapter Local Area Connection* 6:
    Connection-specific DNS Suffix . :
    IPv6 Address. . . . . : 2001:0:4136:e388:819:2d53:3f57:fefa
```

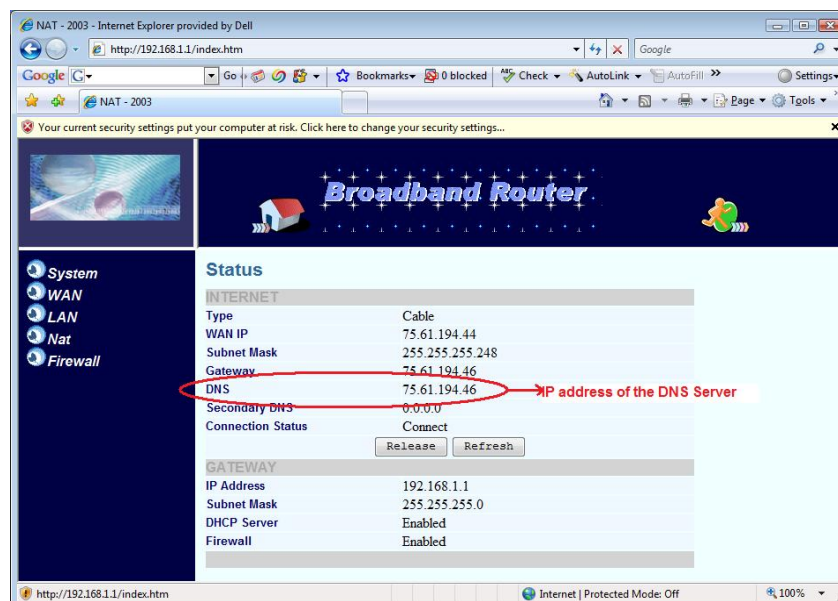
- Enter the IP address 192.168.1.1 in the address box of your browser.
- Enter admin and admin for username and password to access the configuration page of the router. See picture below.



- Click on setup wizard and configure the router for the type of WAN connection you have. The options are Cable Modem, FIX-IP DSL, PPPoE and PPTP. Connection types most popular in the U.S. are Cable Modem which should be selected for Cable as well as Dynamic IP DSL connections and PPPoE when you have a username and a password for connecting to your ISP.

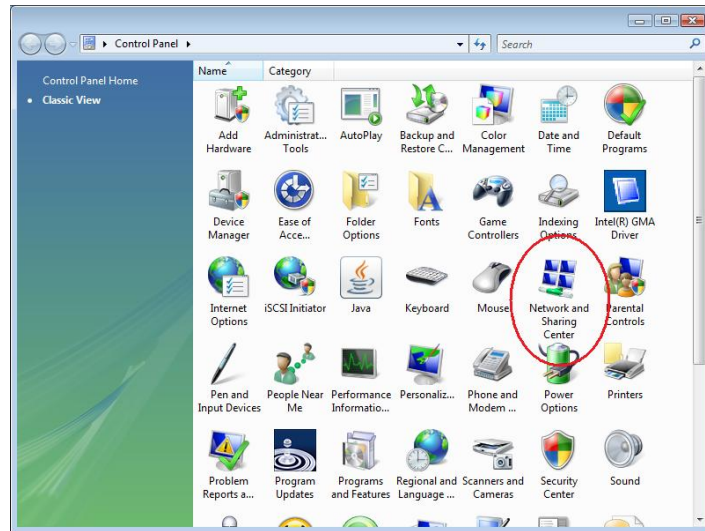


- When done wait for the router to reboot and then from the main page click on advanced setup to see the status page showing both WAN and LAN IPs. Please note that when connected to the Internet the WAN port should receive an IP address with gateway and DNS IPs from the service provider as shown below.

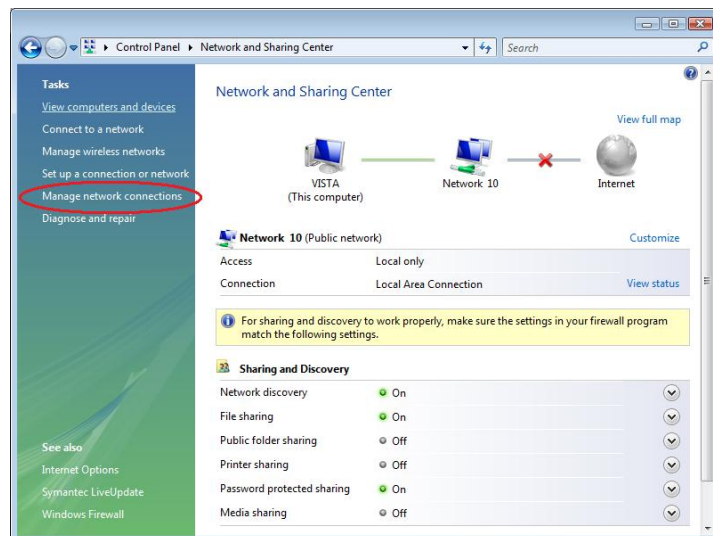


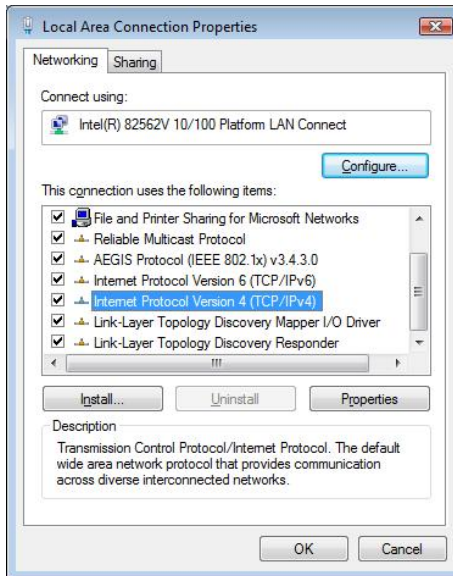
- Please make a note of the DNS IP address.

- On the Vista system go to control panel and double click on Network and sharing center icon.

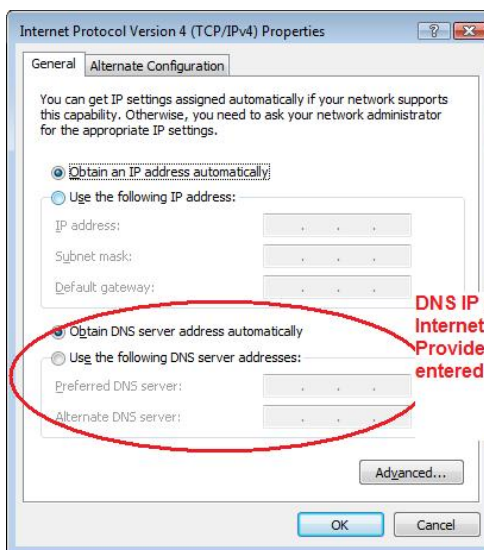


- Then click on manage network connections on the left and go to the properties of the local area connection.

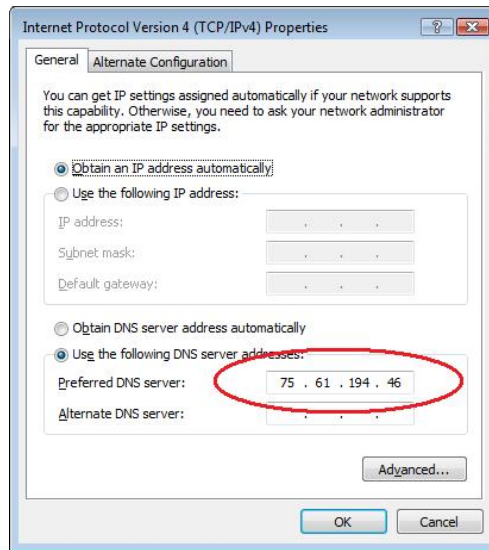




- Highlight IPv4 and click on properties. In the section for DNS IP, select the button next to use the following DNS server and enter the DNS IP address you read from the status page of the router.



DNS IP address from Internet Service Provider needs to be entered here.



- The system is all set now. Just OK out of all the screens, bring up your browser and go to your desired website.

Thank you!