

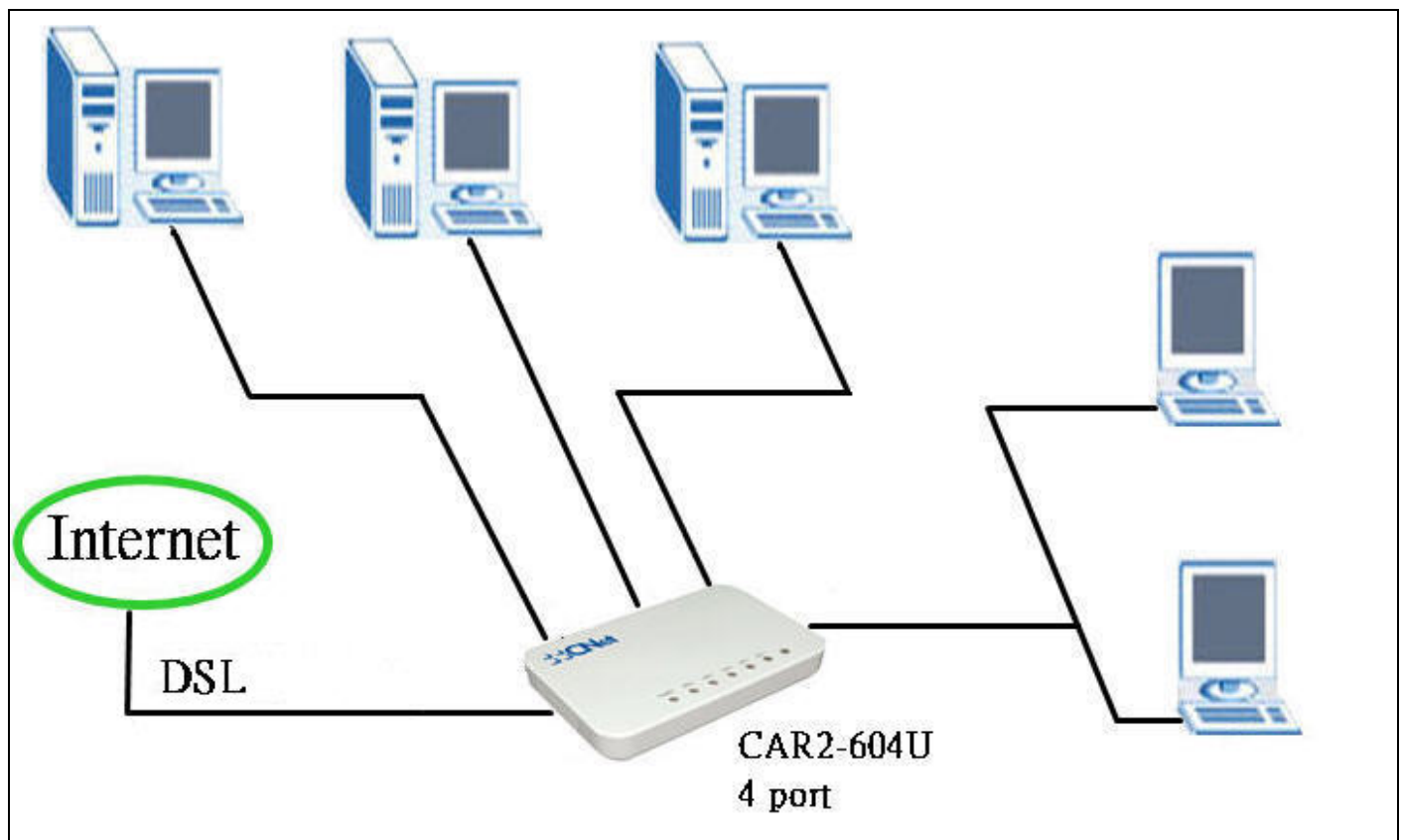
4 PORT ADSL2/2+ MODEM ROUTER

www.cnetusa.com

CNet CAR2-604U is a 4 port Ethernet ADSL2/2+ Router that combines the functions of a full-featured router, ADSL2+ Full Rate Modem, and 4 x 10/100BASE-TX switch ports – all in a single chassis and at a breakthrough price point. CAR2-604U ADSL 2/2+ Router is fully compliant with ADSL, ADSL2, ADSL2+ specification. This rate-adaptive solution is especially designed for enterprise, telecommuters, home or SOHO users that supports ADSL downstream and upstream data rates up to 24 Mbps and 1 Mbps. Moreover, firewall protection secures the computers and network against hackers.

Key Features

- High Speed Internet Access, Networking, Security in One Box
- Easy-to-Use Setup Wizard
- Automatically Detects the Suitable VC Table for Different ISPs
- Complies with ITU ADSL ,ADSL2 and ADSL2+
- Maximum Rate up to 24Mbps for downstream and 1Mbps for upstream
- DSL WAN management protocol TR-069 compliance
- System configuration and firmware upgradeable via Web Browser
- User configurable MAC & IP layer state packet filtering
- Supports UPnP functionality



SPECIFICATIONS

| | |
|---------------------------------------|---|
| Model | CAR2-604U |
| ADSL Data Mode | G.992.1 (G.DMT): Downstream and Upstream data rates up to 8Mbps and 1Mbps G.992.2 (G.Lite): Downstream and Upstream data rates up to 1.5Mbps and 512Kbps G.992.3 (G.dmt.bis/ADSL2): Downstream and Upstream data rates up to 12Mbps and 1Mbps G.992.5 (ADSL 2+): Downstream and Upstream data rates up to 24Mbps and 1Mbps |
| Bridging/ Router Protocols | Ethernet to ADSL self-learning transparent bridging(IEEE802.1D) Support up to 128 MAC learning address NAT (Network address Translation) DHCP (Dynamic Host Configuration Protocol) Server, Client IPCP (Internet Protocol Configuration Protocol) PPP (Point to Point Protocol) RIP (Routing Information Protocol) |
| Interface | One RJ-11 port for ADSL connection Four 10/100Mbps RJ-45 LAN Ports One USB Port One reset button One power jack One power ON / OFF switch |
| LAN Mode | Bridged/Router Ethernet over ATM Classical IP over ATM Support up to 8 Virtual Channel Connections(VCCs) |
| WAN Mode | PPP over ATM PPP over Ethernet |
| Security | User Authentication for PPP PAP (Password Authentication Protocol) CHAP (Challenge Authentication Protocol) Password Protected System Management |
| Power Adapter | DC 12V, 1A |
| Environment | Operating Temperature:32° ~ 122° F (0° ~ 50°C) Storage Temperature: -4° ~ 158° F (-20° ~ 70°C) Humidity: 20% ~ 80% Non-condensing |
| Dimensions (LxWxH) | 7.12 x 4.6 x 0.96 inches (178 x 115 x 24mm) |
| Certifications | CE, FCC |